

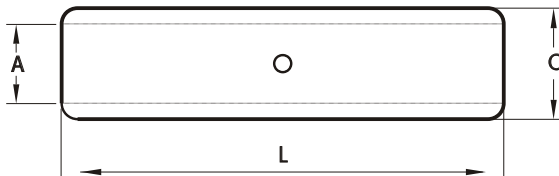
## COMPRESSION JOINTS ALUMINIUM - LONG BARREL

MATERIAL : ELECTROLYTIC GRADE AL 99.5

FINISH : BRIGHT OR ELECTRO TINNED

APPLICATION : UP TO 36 KV

FEATURES : BARREL PREFILLED WITH OXIDE INHIBITING  
COMPOUND & CAPPED AT BOTH ENDS



CABLE mm <sup>2</sup>	CAT. NO.	DIMENSIONS IN mm			PER BOX
		A	C	L	
16	SALC16	5.5	11	55	200
25	SALC25	6.5	15	70	75
35	SALC35	8	15	85	75
50	SALC50	9.7	18	85	40
70	SALC70	11	18	106	35
95	SALC95	13.1	20	106	20
120	SALC120	14.7	22	106	20
150	SALC150	16.5	25	135	10
185	SALC185	18.1	31	135	5
240	SALC240	21	31	145	5
300	SALC300	23.2	38	150	5
400	SALC400	26	38	205	5
500	SALC500	29	45	205	5
630	SALC630	33.5	45	220	5
800	SALC800	37.6	58	280	2
1000	SALC1000	41.5	60	280	2

