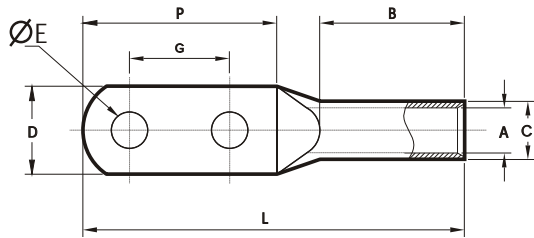


COMPRESSION CABLE LUGS - ALUMINIUM, WITH TWO HOLES

MATERIAL : ELECTROLYTIC GRADE AL 99.5

FINISH : BRIGHT OR ELECTRO-TINNED

FEATURES : BARREL PREFILLED WITH OXIDE INHIBITING COMPOUND & CAPPED AT THE END



CABLE SIZE mm ²	ØE	CAT. NO.	DIMENSIONS IN mm							PER BOX
			A	C	D	P	G	B	L	
35	13	SA2EL35-12	8	15	22	76	44	50	133	40
50	13	SA2EL50-12	9.7	18	25	76	44	50	133	20
70	13	SA2EL70-12	11	18	25	76	44	62	145	20
95	13	SA2EL95-12	13.1	20	28	76	44	73	157	20
120	13	SA2EL120-12	14.7	22	32	76	44	73	160	20
150	17	SA2EL150-16	16.5	25	36	80	44	83	174	10
185	17	SA2EL185-16	18.1	31	45	80	44	83	175	10
240	17	SA2EL240-16	21	31	45	80	44	86	180	10
300	17	SA2EL300-16	23.2	38	55	80	44	89	183	10
400	17	SA2EL400-16	26	40	58	80	44	113	207	5
500	17	SA2EL500-16	29	45	65	80	44	125	221	5

DIMENSION 'G' AS PER REQUIREMENT ALSO AVAILABLE

