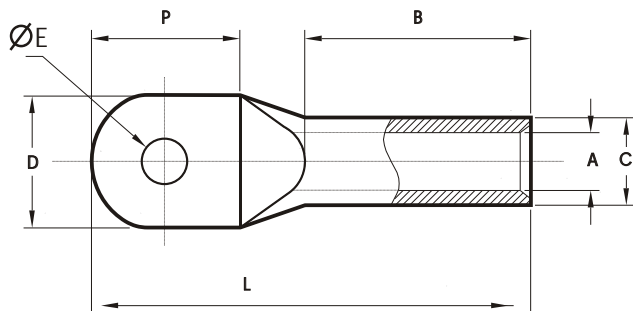


## COMPRESSION CABLE LUGS - ALUMINIUM

MATERIAL : ELECTROLYTIC GRADE AL 99.5

FINISH : BRIGHT OR ELECTRO-TINNED

FEATURES : BARREL PREFILLED WITH OXIDE INHIBITING COMPOUND & CAPPED AT THE END



CABLE SIZE mm <sup>2</sup>	ØE	CAT. NO.	DIMENSIONS IN mm						PER BOX
			A	C	D	P	B	L	
16	8.2	SASL16-8	5.5	11	20	21	41	69	150
	10.5	SASL16-10							
25	8.2	SASL25-8	6.5	15	22	21	41	69	75
	10.5	SASL25-10							
35	10.5	SASL35-10	8	15	25	22	50	79	75
	13	SASL35-12							
50	10.5	SASL50-10	9.7	18	26	24	50	81	45
	13	SASL50-12							
70	10.5	SASL70-10	11	18	26	26	62	95	40
	13	SASL70-12							
95	10.5	SASL95-10	13.1	20	29	28	73	109	35
	13	SASL95-12							
	17	SASL95-16							
120	13	SASL120-12	14.7	22	32	30	73	114	20
	17	SASL120-16							
150	13	SASL150-12	16.5	25	36	34	83	128	10
	17	SASL150-16							
	21	SASL150-20							
185	13	SASL185-12	18.1	31	45	36	83	131	5
	17	SASL185-16							
	21	SASL185-20							
240	13	SASL240-12	21	31	45	44	86	144	5
	17	SASL240-16							
	21	SASL240-20							
300	17	SASL300-16	23.2	38	55	54	89	157	5
	21	SASL300-20							
400	17	SASL400-16	26	38	55	60	113	187	5
	21	SASL400-20							
500	17	SASL500-16	29	45	65	64	125	205	2
	21	SASL500-20							
630	17	SASL630-16	33.5	45	65	68	140	225	2
	21	SASL630-20							
800	21	SASL800-20	37.6	58	84	78	147	250	2
	27	SASL800-25							
1000	21	SASL1000-20	41.5	60	87	90	160	280	2
	27	SASL1000-25							

